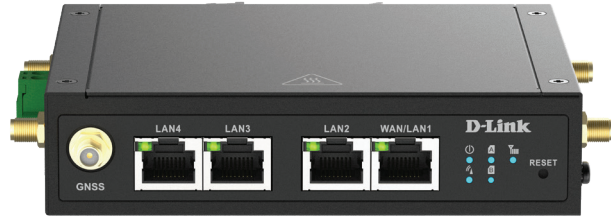


# DWM-530-T

## 4G M2M Router



### Key Features



**Dual-SIM Failover**



**VPN Security**



**Eth and 4G Failover**



**SMS Event Management**



**Industrial Grade Design**



**Management Platform**

### Applications

- Store and Shop
- Remote Branch
- Smart Bus Stop
- Popup and Booth

The DWM-530-T 4G M2M Router delivers LTE Cat 4 capability. It is equipped with Four Fast Ethernet ports, one of which can be configured as an Ethernet WAN. This allows easy switching between broadband and 4G LTE. Additionally, Wi-Fi N300 connectivity is provided, making it suitable for a wide range of M2M applications.

### M2M Network

The DWM-530-T 4G cellular router is expertly designed for Machine to Machine (M2M) networks, providing stable 4G connectivity for efficient operations in remote environments. With multiple Ethernet ports for multiple devices, reducing the need for external switches and lowering costs. Embedded Wi-Fi technology that technicians run remote maintenance, eliminating the need for physical disassembly and significantly reducing maintenance expenses. Additionally, the remote management platform D-ECS enables smart diagnostics of devices, minimizing the need for onsite personnel and further cutting operational costs.

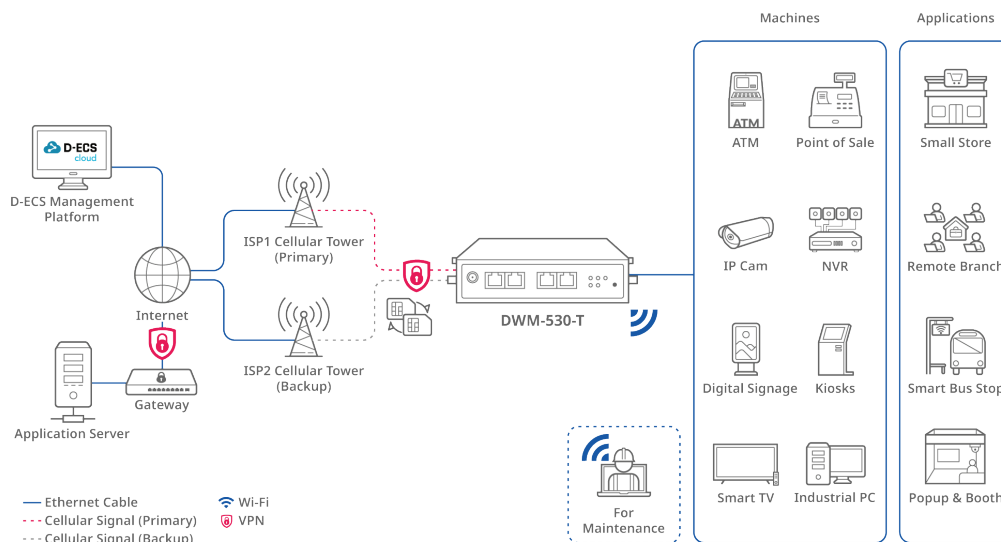
### Superior Connection Capability

The DWM-530-T provides a backup connection in case of disruptions, ensuring stable connectivity via the auto-failover feature, and offers multiple WAN switching options to maintain superb connectivity. The failover capabilities across dual SIM cards and between 4G and Ethernet WAN connections ensure seamless service without interruptions. The device is equipped with multiple VPN protocols including IPSec, OpenVPN, PPTP, L2TP, and GRE. These VPN features enhance security by facilitating encrypted connections, offering versatile tunneling options, and enabling secure remote access. Whether for data protection, creating secure tunnels for remote work, or connecting multiple sites, these VPN capabilities ensure that your network remains secure and flexible.

### Suitable for Harsh Environments

DWM-530-T is designed to withstand harsh environments with its metal casing ensuring durability and operates within a broad temperature range from -30 to 70°C. It supports wide input voltage range of DC 9-36 V. Additionally, the model features built-in Network Address Translation (NAT) and bridge mode, simplifying network setup while enhancing security and interconnectivity.

### Connection Diagram



# Specifications

## Device Interface

- Cellular: 4G LTE Cat 4
- SIM Slot: 2 x SIM (Micro SIM) with auto failover
- Ethernet: 1 x FE WAN/LAN port, 3 x FE LAN ports
- Wi-Fi: Wi-Fi 6 N300 (2.4 GHz)
- GNSS: GPS/GLONASS
- Log Storage: Micro SD slot
- Power Input: DC 9-36 V terminal block
- Antenna Connectors: 2 x SMA (F) cellular, 2 x SMA (RP-F) Wi-Fi, 1 x SMA (F) GPS

## Performance<sup>1</sup>

- Maximum Cellular Data Throughput:
  - LTE: 150 Mbps (DL) / 50 Mbps (UL)
- Maximum Wi-Fi Data Rate:
  - 2.4 GHz: Up to 300 Mbps

## WAN

- WAN Interface: Cellular, Ether-WAN, Wi-Fi
- Multi-WAN Function: Failover, load balance
- Cellular: NAT, bridge
- Ether-WAN: Dynamic IP, static IP, PPPoE, PPTP, L2TP
- Connection Monitoring: Ping/DNS query reboot

## Network

- LAN & VLAN: DHCP server/relay, port/tag-based VLAN
- Routing: Static, dynamic RIPv1/v2, OSPF, BGP
- DDNS: DynDNS, No-IP, dynamic DO

## Wi-Fi

- Function: Multi SSID, WIDS, AP router mode
- Security: WPA/WPA2, WPA2-PSK, WPA-PSK/WPA2-PSK, 802.1x
- Encryption: WEP, AES, TKIP/AES

## Services

- Cellular Toolkit: Data usage, SMS, SIM PIN, network scan
- Event Management: SMS, e-mail

## VPN

- VPN Tunnel: IPSec, OpenVPN, PPTP, L2TP, GRE
- VPN Pass Through: IPSec, PPTP, L2TP

## Security

- Firewall: SPI firewall, IPS, port forward
- Access Control: MAC/IP filter, URL blocking

## Administration

- Management: SNMPv1/2/3, D-Link D-ECS<sup>2</sup>
- Maintenance: Web UI, diagnostic tools via ping/tracert
- System: FW upgrade, backup and restore config, reboot and reset
- Logging: System log, external syslog server

## Monitoring

- Device Status: CPU/memory usage, WAN status, client list
- Cellular Status: IMSI, ICCID, operator, connection state, connected band, RSSI, SINR, RSRP, RSRQ, LAC, TAC, cell ID, MCC, MNC
- Security: VPN status, firewall status
- Statistics and Reports: Cellular signal, cellular usage

## Operating Environment

- Operating Temperature: -30 to 70°C (-22°F to 158°F)
- Storage Temperature: -40 to 85°C (-40°F to 185°F)
- Operating Humidity: 10% to 95% non-condensing
- Storage Humidity: 0 to 95% non-condensing
- Dimensions: 131 x 99 x 31 mm

## Certifications and Approvals

- Certifications: CE, UKCA

## Package Contents (Standard)

- 2 x Cellular SMA Antennas
- 2 x Wi-Fi RP-SMA Antennas
- 1 x RJ-45 Cable
- 1 x Power Adapter
- 1 x Terminal Block (2-pin)
- 2 x DIN-Rail Kit

# Available Versions

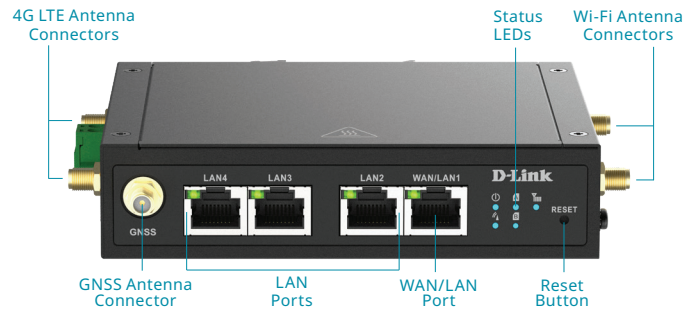
## EU SKU (HW: A1)

4G LTE	FDD: B1/B3/B7/B8/B20/B28A
	TDD: B38/B40/B41

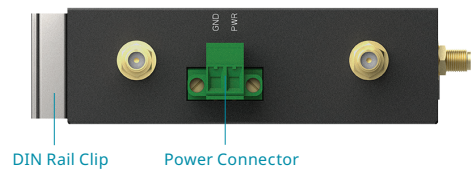
- 1 Data rates are theoretical. Data transfer rate depends on network capacity and signal strength.
- 2 You only have to pay a M2M device license fee when applying for D-ECS license.

# Hardware

## Front View



## Side View



## Bottom View

